

Stellage

FAMILY

Stellage	Specimen and Technical Documentation Version 1.1	About Stellage is a versatile geometric serif typeface with square and triangular serifs. Inspired by the visual culture of postmodern architecture and design. You could imagine every character of Stellage as a little building where modern and classical shapes meet. The result is a sharp serif that offers great legibility in small sizes with interesting details as a display typeface.
Designer	Mark Niemeijer	Additional Information Stellage is designed by Mark Niemeijer, initially as an Open Studio project. Starting in 2019, Stellage (V.1) was released in 2020.
Release	08.04.2020	Foundry SM is a digital type foundry based in Apeldoorn, the Netherlands, initiated in 2017 by Open Studio. We design and distribute modern retail- and custom fonts that serve the end user and help them communicate clearly. At SM Foundry we produce fonts with functional and aesthetic consideration, resulting in a library of versatile typefaces. In addition to our retail fonts, we offer design solutions in the form of typeface customization, language extensions, custom characters, fonts, complete typefaces and other typographic design services.
Licensing	Licenses are available for Desktop-, Web-, and Trial fonts. For other licensing options not mentioned, such as app or unlimited users, please get in touch. Student discount (-40%) is available on request.	If you'd like to meet up, discuss a prospective project or find out more about a typeface or SM, please get in touch through the website or following e-mail address as stated below.
Trial Fonts	Test versions of all typefaces are available on our website for free. These have a limited character set that includes A-Z, a-z, 0-9 and some basic punctuation.	Language Support Afrikaans, Albanian, Basque, Bosnian, Breton, Catalan, Croatian, Czech, Danish, Dutch, English, Estonian, Faroese, Filipino, Finnish, French, Frisian, Friulian, Gaelic, German, Greenlandic, Hungarian, Icelandic, Indonesian, Irish, Italian, Kinyarwanda, Latin, Latvian, Lithuanian, Luxembourgish, Malay, Maltese, Norwegian, Māori, Montenegrin, Polish, Portuguese, Romanian, Scottish Gaelic, Serbian (Latin), Slovak, Slovenian, Spanish, Swahili, Swedish, Turkish, Welsh, Western Frysian, Zulu and more.
Font Formats	Desktop OTF webfonts WOFF and WOFF2. Other formats like TTF and EAT are available on request.	Licensing Typefaces may only be used as dictated by the terms of the SM End User License Agreement (EULA). Visit our website for all licensing information. All typefaces or fonts are exclusively available on s-m.nu.
Stellage Family	5 Styles, 1 Weight Stellage Display Stellage Regular Stellage Constructed Stellage Italic Stellage Constructed Italic	Copyright © '22 SM Foundry for Contemporary Type Design. An initiative by Open Studio, Office for Graphic Design and Art Direction. Contact Mail@s-m.nu www.s-m.nu

STELLAGE

¹ Regular ² *Italic*

³ Constructed ⁴ *Italic*

⁵ Display

Stellage Display and Regular, 415 pt.

Ascender 950

Cap Height 720

X Height 486

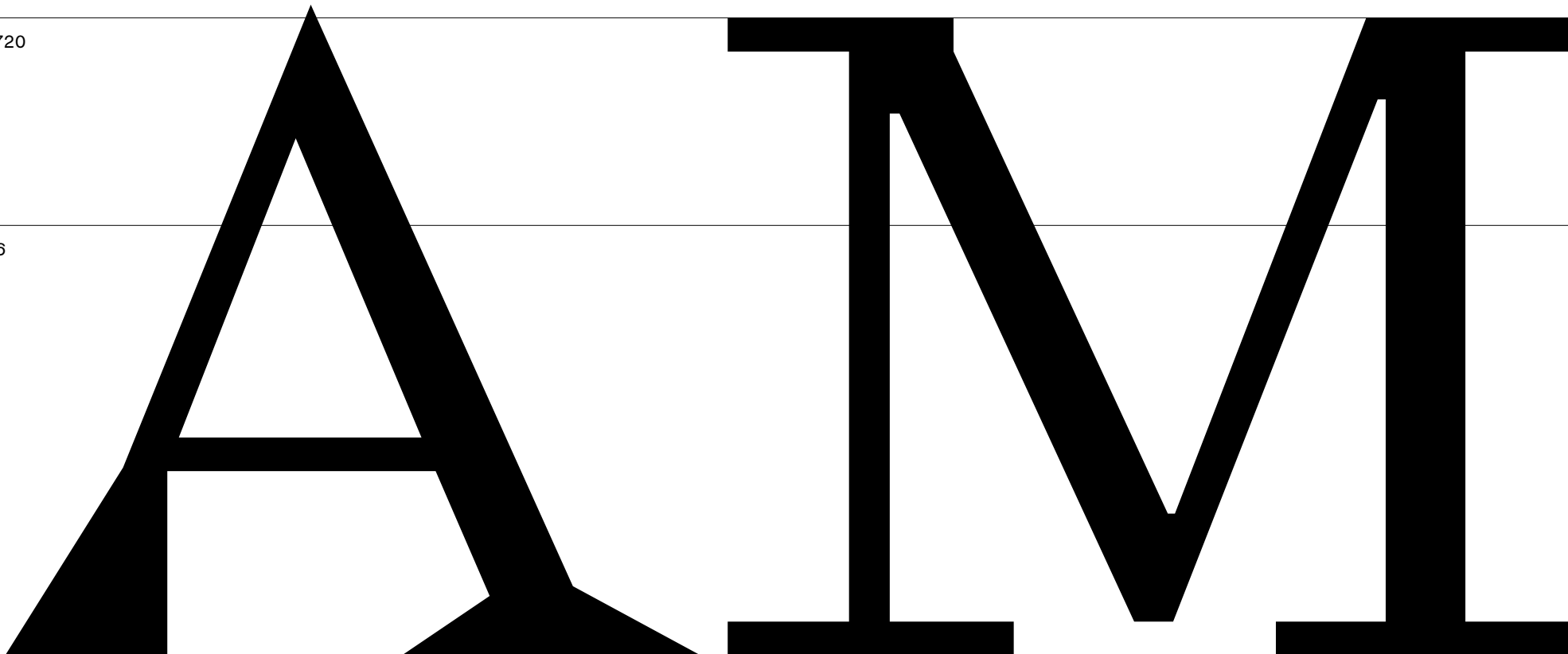
Baseline 0

Descender -243

SM

Stellage Specimen

03



Stellage Display

Aa Bb Cc Dd Ee Ff Gg Hh Ii Jj
Kk Ll Mm Nn Oo Pp Qq Rr Ss Tt
Uu Vv Ww Xx Yy Zz & Æ ß @
0 1 2 3 4 5 6 7 8 9 : ; , ! ?

Fall, Winter 81/82 【New】 Collection Outerwear PARIS

1 Display, 9 pt / 10,5 pt.

Bofill and a group of close friends created Taller de Arquitectura [Architecture Workshop], initially hosted in his father's construction business with offices on Plaça de Catalunya in the center of Barcelona. Building on Catalan traditions of craftsmanship, he enlisted architects and engineers but also writers and artists into a multidisciplinary effort, which later branched into urban design and urban planning. The team experimented on original methodologies based on three-dimensional modular geometries, such as those of the Gaudi District in Reus, El Castillo de Kafka in Sant Pere de Ribes above Sitges, Xanadu, and La Muralla Roja in Calp. The same thinking was developed on a larger scale with the project La Ciudad en el Espacio, whose construction started in the Moratalaz area of Madrid but was abruptly stopped by Francoist mayor Carlos Arias Navarro. It was instead realized with the construction of Walden 7 in Sant Just Desvern near Barcelona. These projects were recognized as exemplars of critical regionalism and can be viewed as a reaction against both architectural modernism and the Francoist dictatorship in Spain. Bofill then started working in France, and gradually introduced symbolic elements into the Taller's designs that echo French traditions of classical architecture.

This phase culminated in the expansive Antigone new district of Montpellier in Southern France, for which Bofill presented the initial master plan. It is associated with both large-scale industrialization in precast concrete and classical forms and geometries in contemporary architecture, which Bofill called "modern classicism". As a consequence, Bofill opus is often cited as that one of the most representative and significant postmodern architects to have lived and created in Europe. From the mid-80s on, he increasingly shifted to glass and steel for the materials used in his projects, while still using a classical vocabulary of columns and pediments. Representative projects of that period include the West Wacker Drive office tower in Chicago, the extension of Barcelona Airport ahead of the Summer Olympics, and the National Theater of Catalonia, also in Barcelona. In 2000, Bofill re-centralized the activities of the Taller at its head office near Barcelona. His designs in more recent years gradually shed his classical decorative vocabulary of the 1980s and 1990s, while retaining a highly formal sense of geometry. Representative buildings of this more recent period include the W Barcelona Hotel on the Barcelona seafront and the Mohammed VI Polytechnic University in Ben Guerir, Morocco.

14 pt

International Monument Foundation Structuralist Bureau Retrospective

24 pt

Olympic Metabolism Expressions After Jazz

34 pt

Rational Thoughts Utilize Format

44 pt

Offices For The Generations

54 pt

Wealth Reflects Phrases

64 pt

Futurist Institute Tasks

74 pt

Artificial Manifesting

84 pt

Globalize Objectives

94 pt

Villager Associate

Stellage
Regular
Italic

Regular, 45 pt / 50 pt.

Aa Bb Cc Dd Ee Ff Gg Hh Ii Jj
 Kk Ll Mm Nn Oo Pp Qq Rr Ss Tt
 Uu Vv Ww Xx Yy Zz & Æ ß @
 0 1 2 3 4 5 6 7 8 9 : ; , ! ?

Italic, 45 pt / 50 pt.

*Aa Bb Cc Dd Ee Ff Gg Hh Ii Jj
 Kk Ll Mm Nn Oo Pp Qq Rr Ss Tt
 Uu Vv Ww Xx Yy Zz & Æ ß @
 0 1 2 3 4 5 6 7 8 9 : ; , ! ?*

Agrupada *Taller de* Arquitectura *e* Urbanista [RBT A]

1 Regular, 9 pt / 10,5 pt.

Bofill and a group of close friends created Taller de Arquitectura [Architecture Workshop], initially hosted in his father's construction business with offices on Plaça de Catalunya in the center of Barcelona. Building on Catalan traditions of craftsmanship, he enlisted architects and engineers but also writers and artists into a multidisciplinary effort, which later branched into urban design and urban planning. The team experimented on original methodologies based on three-dimensional modular geometries, such as those of the Gaudi District in Reus, El Castillo de Kafka in Sant Pere de Ribes above Sitges, Xanadu, and La Muralla Roja in Calp. The same thinking was developed on a larger scale with the project La Ciudad en el Espacio, whose construction started in the Moratalaz area of Madrid but was abruptly stopped by Francoist mayor Carlos Arias Navarro. It was instead realized with the construction of Walden 7 in Sant Just Desvern near Barcelona. These projects were recognized as exemplars of critical regionalism and can be viewed as a reaction against both architectural modernism and the Francoist dictatorship in Spain. Bofill then started working in France, and gradually introduced symbolic elements into the Taller's designs that echo French traditions of classical architecture.

2 Italic, 9 pt / 10,5 pt.

This phase culminated in the expansive Antigone new district of Montpellier in Southern France, for which Bofill presented the initial master plan. It is associated with both large-scale industrialization in precast concrete and classical forms and geometries in contemporary architecture, which Bofill called "modern classicism". As a consequence, Bofill opus is often cited as that one of the most representative and significant postmodern architects to have lived and created in Europe. From the mid-80s on, he increasingly shifted to glass and steel for the materials used in his projects, while still using a classical vocabulary of columns and pediments. Representative projects of that period include the West Wacker Drive office tower in Chicago, the extension of Barcelona Airport ahead of the Summer Olympics, and the National Theater of Catalonia, also in Barcelona. In 2000, Bofill re-centralized the activities of the Taller at its head office near Barcelona. His designs in more recent years gradually shed his classical decorative vocabulary of the 1980s and 1990s, while retaining a highly formal sense of geometry. Representative buildings of this more recent period include the W Barcelona Hotel on the Barcelona seafront and the Polytechnic University in Morocco.

14 pt

International Monument Foundation *Structuralist Bureau Retrospective*

24 pt

Olympic Metabolism Expressions After Jazz

34 pt

Rational Thoughts *Utilize Format*

44 pt

Office For The Generation

54 pt

Wealth Reflects Phrases

64 pt

Futurist *Institute Tasks*

74 pt

Artificial Manifesting

84 pt

Globalize *Objectives*

94 pt

Villager Associate

Stellage
Constructed
Italic

Constructed, 45 pt / 50 pt.

Aa Bb Cc Dd Ee Ff Gg Hh Ii Jj
 Kk Ll Mm Nn Oo Pp Qq Rr Ss Tt
 Uu Vv Ww Xx Yy Zz & Æ ß @
 0 1 2 3 4 5 6 7 8 9 : , ! ?

Italic, 45 pt / 50 pt.

Aa Bb Cc Dd Ee Ff Gg Hh Ii Jj
Kk Ll Mm Nn Oo Pp Qq Rr Ss Tt
Uu Vv Ww Xx Yy Zz & Æ ß @
0 1 2 3 4 5 6 7 8 9 : , ! ?

Aldo is Currently at Work, in Milano. Practice / Theory

1 Constructed, 9 pt / 10,5 pt.

Bofill and a group of close friends created Taller de Arquitectura [Architecture Workshop], initially hosted in his father's construction business with offices on Plaça de Catalunya in the center of Barcelona. Building on Catalan traditions of craftsmanship, he enlisted architects and engineers but also writers and artists into a multidisciplinary effort, which later branched into urban design and urban planning. The team experimented on original methodologies based on three-dimensional modular geometries, such as those of the Gaudi District in Reus, El Castillo de Kafka in Sant Pere de Ribes above Sitges, Xanadu, and La Muralla Roja in Calp. The same thinking was developed on a larger scale with the project La Ciudad en el Espacio, whose construction started in the Moratalaz area of Madrid but was abruptly stopped by Francoist mayor Carlos Arias Navarro. It was instead realized with the construction of Walden 7 in Sant Just Desvern near Barcelona. These projects were recognized as exemplars of critical regionalism and can be viewed as a reaction against both architectural modernism and the Francoist dictatorship in Spain. Bofill then started working in France, and gradually introduced symbolic elements into the Taller's designs that echo French traditions of classical architecture.

2 Italic, 9 pt / 10,5 pt.

This phase culminated in the expansive Antigone new district of Montpellier in Southern France, for which Bofill presented the initial master plan. It is associated with both large-scale industrialization in precast concrete and classical forms and geometries in contemporary architecture, which Bofill called "modern classicism". As a consequence, Bofill's opus is often cited as that one of the most representative and significant postmodern architects to have lived and created in Europe. From the mid-80s on, he increasingly shifted to glass and steel for the materials used in his projects, while still using a classical vocabulary of columns and pediments. Representative projects of that period include the West Wacker Drive office tower in Chicago, the extension of Barcelona Airport ahead of the Summer Olympics, and the National Theater of Catalonia, also in Barcelona. In 2000, Bofill re-centralized the activities of the Taller at its head office near Barcelona. His designs in more recent years gradually shed his classical decorative vocabulary of the 1980s and 1990s, while retaining a highly formal sense of geometry. Representative buildings of this more recent period include the W Barcelona Hotel on the Barcelona seafront and the Polytechnic University in Morocco.

14 pt

International Monument Foundation *Structuralist Bureau Retrospective*

24 pt

Olympic Metabolism Expressions After Jazz

34 pt

Rational Thoughts *Utilize Format*

44 pt

Office For The Generation

54 pt

Wealth Reflects Phrases

64 pt

Futurist *Institute Tasks*

74 pt

Artificial Manifesting

84 pt

Globalize *Objectives*

94 pt

Villager Associate

S
M Foundry for Contemporary Typeface Design